

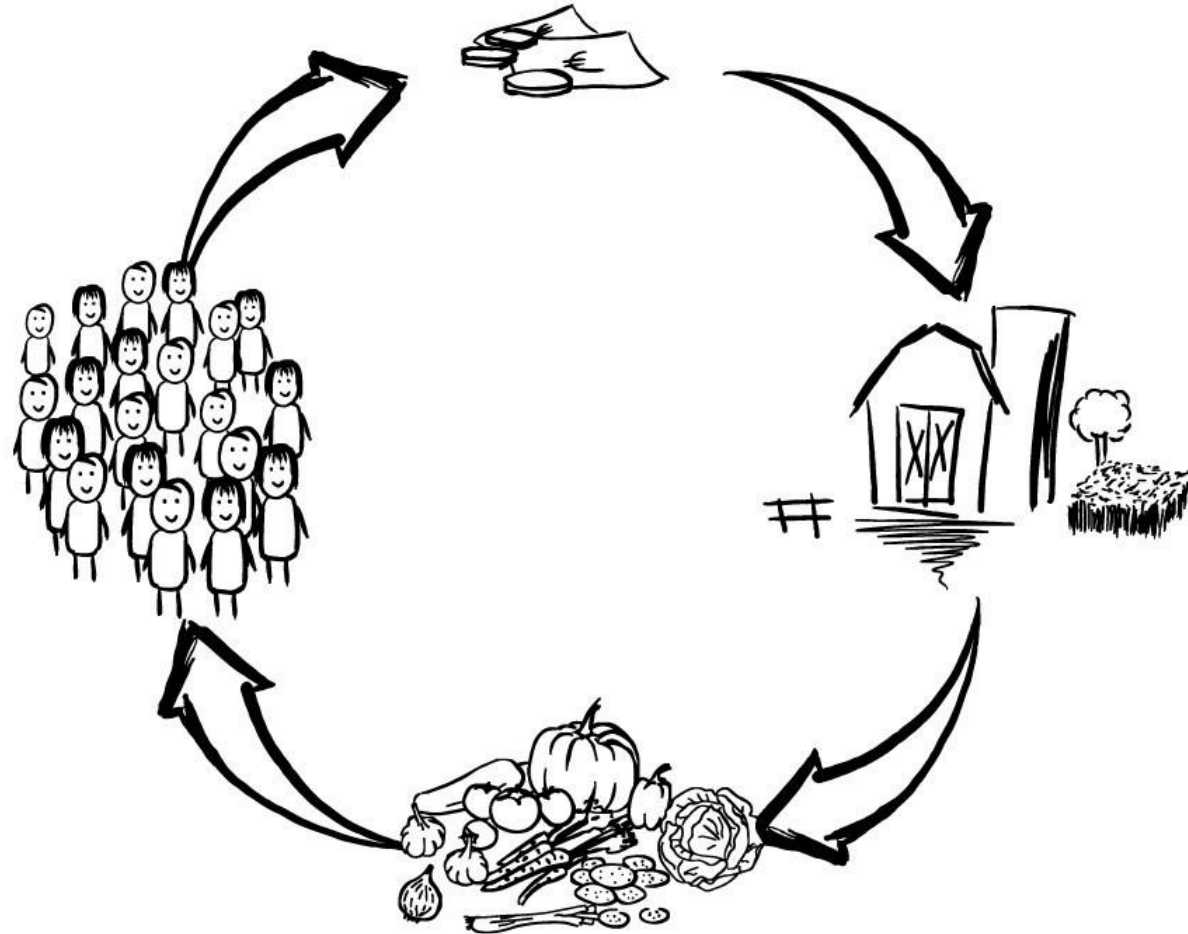


Case-Study

Solidarity- based Agriculture

in Germany

Principle of Solidarity- based Agriculture

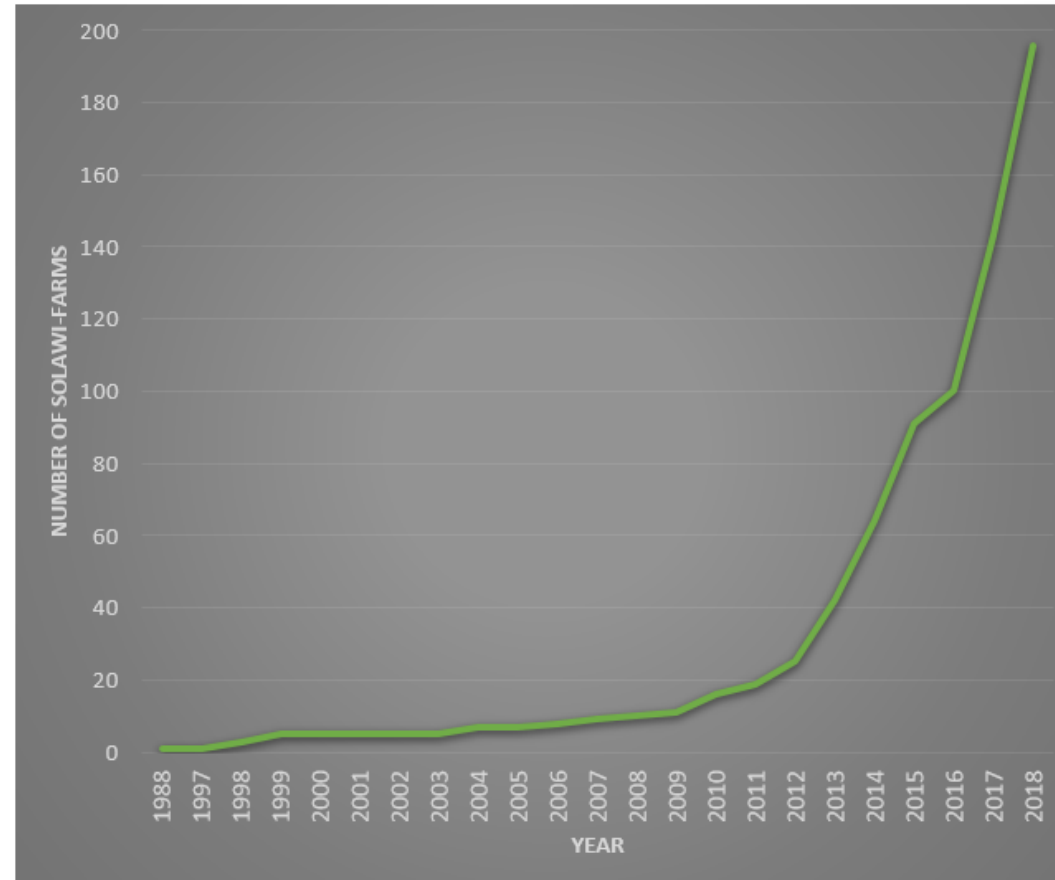


A little History

- 1988 First farm in Germany
- 2007 nine farms and initiatives
- 2009 advancement award for ecological agriculture to Buschberghof
- 2010 The Kassel-meeting on how to promote SoLaWi-concept
- 2011 Founding german Network on Solidarity-based Agriculture
- Since then, permanently increasing movement

Oct. 2018: 196 existing farms; 105 founding initiatives

SoLaWi in Germany



Eigene Darstellung 2018

Today: 361 existing farms; 76 founding initiatives

SoLaWi in Germany

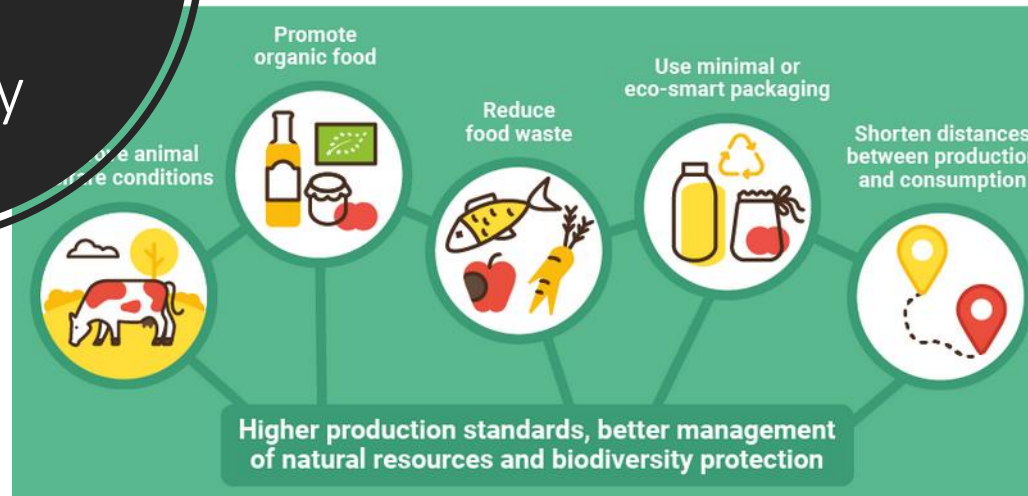


SFSC
Innovation
Case-Study
SoLaWi
Germany

Social benefits



Environmental benefits



Economic benefits



<https://www.eufic.org/en/food-production/article/the-benefits-and-sustainability-of-short-food-supply-chains>

The German SoLaWi-Network



Part I

The German SoLaWi-Network

- Association of people with agricultural background and consumers committed to the dissemination of solidarity-based agriculture
- Movement, grassroots organisation and association
- Conceptualization Solidarity based agriculture (SoLaWi) instead of CSA

The Network
on Solidarity-
based
Agriculture
Germany



The German SoLaWi-Network

The Network
on Solidarity-
based
Agriculture
Germany

Goals:

- Boost the idea of SoLaWi and a paradigm shift in agriculture
- Encourage and promote the initiation of new farms
- Advise and support new initiatives and existing farms
- Setting standards and professionalize SoLaWi-system

Means:

- Homepage & monthly newsletter
- Advocacy, consulting services, public relations and media provision
- National und international networking
- Two national meetings plus one council meeting per year

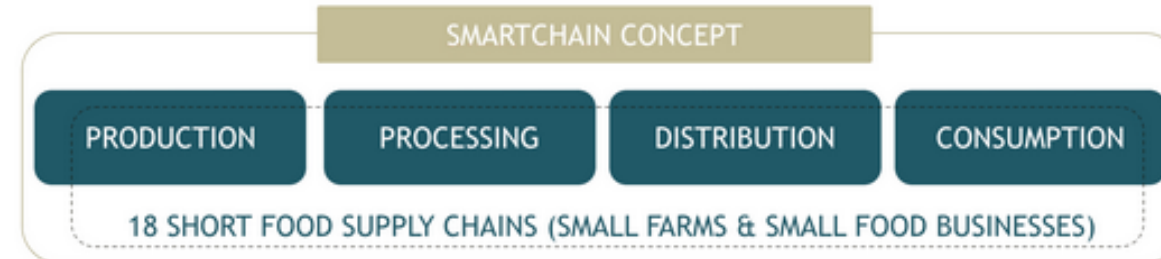
Part II

The German SoLaWi-Farms and their members



SoLaWi in
Germany –
farm
structures

- Initiated by consumer groups or producers
- Comparatively high number of employees
- rather small farms (0,5 – 250 hectare)
- high diversity in structure and production-systems
 - Full-/ partial-/cooperations-SoLawi
 - fees of members for a share therefore hardly comparable
- most farms are certified organic



The Network on Solidarity- based Agriculture Case study

- Generating Database (Interviews, World-Café with farmers ...)
- Role Network-association and/or SoLaWi-farmer(s)?
- Evaluation of results (bottlenecks)

Benefits

- Networking and new connections
- Better view at EU-wide situation in SFSC
- Raising awareness and professionalize SoLaWi

SoLaWi in
Germany –
Future
perspective

- SoLaWi-concept is becoming more „mainstream“
- Experiences and learnings from Smartchain
- Cooperation in the future more and more important
- Supporting self-organisation in working groups (free solawi-gardener-education, seeds, IT, ...)
- competitiveness through digitalization
 - increasing efficiency on farms through open source tools and specialized software i.e. micro farm planner)
 - community-platform for knowledge-exchange
- Further development depends on
 - Trend and attitude of (people in) cities
 - Agricultural policy development (conversion attractiveness)



Thank you!